



Market Indicators

TOP GAINER	%	TOP LOSER	%
JPASSOCIAT	5.53	M&M	(2.18)
IDFC	4.51	HINDUNILVR	(2.09)
DLF	3.92	ITC	(1.90)
SESAGOA	3.38	AMBUJACEM	(1.26)
HINDALCO	3.25	BPCL	(1.07)

Broder Indices

Index	Closing Value	Change in (Pts)	Change (%)
MID CAP	6410.07	+72.35	1.14
SMALL CAP	6238.02	+92.13	1.50
IPO	1680.57	+22.64	1.37

Sectoral Indices

AUTO	10755.00	34.61	0.32
BANKEK	13616.18	87.65	0.65
CD	7226.79	(31.85)	(0.44)
CG	9525.41	229.62	2.47
FMCG	5619.62	(59.62)	(1.05)
HC	7928.66	14.00	0.18
IT	6944.59	90.19	1.32
METAL	9329.08	200.49	2.20
OIL & GAS	8833.09	73.38	0.84
POWER	1764.32	11.14	0.64
PSU	6905.47	45.42	0.66
REALTY	2034.94	87.91	4.52
TECK	3983.28	41.09	1.04

Currency Movement

USDINR	54.71	0.05↑
EURINR	82.79	0.13↑
GBPINR	71.43	0.22↑
JPYINR	58.69	0.06↓

Market Breadth

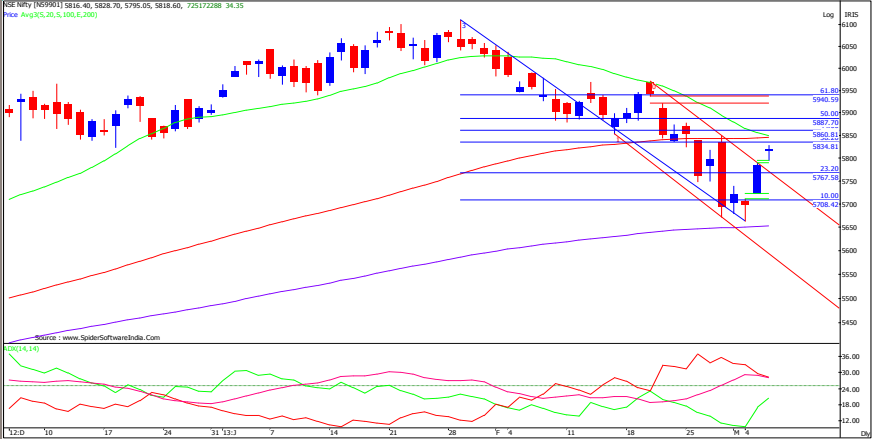
Exchange	Advances	Declines	Unchanged
BSE	1730	1116	131
NSE	1034	468	83

MARKET STATISTICS

ACTION	FII (₹) Cr.	DII (₹) Cr.
CASH BUY	3505.68	938.92
CASH SELL	2981.63	1538.91
(Provisional)	+524.05	(599.99)

FII Derivatives	Buy (Cr.)	(Sell Cr.)	Net (Cr.)
Index Futures	1379.43	1188.25	191.18
Index Options	9453.48	8541.36	912.12
Stock Futures	1714.96	1107.28	607.68
Stock Options	1068.67	1131.67	(63.00)
Total			+1647.98

Exhibit 1: Daily Nifty Chart



NIFTY OUTLOOK

Yesterday the Nifty opened with a bullish gap of 32 points above the previous session's and registered a low of 5795.05 levels in the initial trade and shifted to consolidation by sustaining higher levels. At end of the day Nifty closed at 5818.60 levels with gain of 34.35 points.

- ◆ The price action formed high wave candle with small body with long lower shadow with long lower shadow with minor upper wick indicates indecisiveness among the market participants. The indices has closed precisely above the upper band of declining channel.
- ◆ As things are going in line with expectation after sustaining above the resistance of 5764 which is mid point of the February 28, 2013 a bearish candle body and now entering into pivotal resistance area of 5840 and 5892 levels which are 38.20% & 50% value of Fibonacci retracement from entire decline from (6112 to 5672). A sustenance above such area indices negate the short term weakness and may test 5900 levels.
- ◆ Immediate pullback attempts will incur stiff resistance around the 5840 - 5890 area region as the key support earlier likely to reverse its role as resistance as per change of Polarity rule. And above this the last Thursday's falling gap area of 5921 - 5937 will be a strong supply area.
- ◆ The index has signaled violation of medium term positive structure following with a bearish cross-over of 20 x 50 SMA, which is known as medium term "Death cross" suggest medium term bearish view. A break below 5648 will see continuance of the downward momentum and head towards the 5550 region in the near term. The presence of the 200 SMA (5564) and the November 2012 low placed around 5550 makes this a support area. The rising gap created on Tuesday between 5722 and 5712 would likely to act an immediate technical support. Any violation same will see the index resume the downward bias and head towards the 5500-5550 region, which is a key support band in the near term as discussed above.
- ◆ For today trend deciding level for Nifty placed at 5814 if Nifty trade above this level then it may go up to 5834 - 5860 - 5886 level. However if Nifty trade below 5800 then it may find immediate support at 5780 level any violation of such support would signal further decline up to 5760 - 5720 level.

Indian Index Movement

MOVEMENT	SENSEX	NIFTY	SMA	SENSEX	NIFTY
OPEN	19254.20	5816.40	5 Days	19011	5743
HIGH	19293.39	5828.70	20 Days	19332	5850
LOW	19195.47	5795.05	48 Days	19625	5944
CLOSE	19252.61	5818.60	100 Days	19258	5846
CHANGE IN PTS	+109.44	+34.35	120 Days	19154	5813
CHANGE IN %	0.57	0.59	200 Days	18341	5563

*Source: BSE, NSE, BI, Capital Market & rbi.org.in



Symbol	PIVOT TABLE					Simple Moving Average		
	S2	S1	Pivot Point	R1	R2	5 Days	20 Days	55 Days
SENSEX	19149	19201	19247	19299	19345	19011	19332	19593
NIFTY	5780	5800	5814	5836	5848	55743	5850	5938
BANK NIFTY FUTURE	11832	11877	11910	11956	11989	11691	12122	12472
NIFTY FUTURE	5799	5820	5835	5856	5871	5756	5861	5954
NIFTY COMPONENTS								
ACC	1232	1243	1256	1267	1280	1254	1278	1339
AMBUJACEM	189	190	193	195	197	192	193	197
ASIANPAINT	4392	4427	4454	4489	4516	4372	4475	4435
AXISBANK	1377	1390	1402	1415	1427	1376	1421	1405
BAJAJ-AUTO	1955	1964	1975	1984	1995	1987	1998	2066
BANKBARODA	705	717	729	742	754	711	744	819
BHARTIARTL	314	317	322	325	330	319	315	327
BHEL	197	200	202	205	208	201	205	216
BPCL	377	380	387	391	397	383	389	389
CAIRN	292	296	298	302	305	294	307	320
CIPLA	375	378	381	385	388	373	379	401
COALINDIA	312	314	319	321	325	315	332	346
DLF	257	264	268	275	279	263	267	254
DRREDDY	1767	1788	1802	1823	1836	1773	1822	1866
GAIL	325	330	335	339	344	333	336	351
GRASIM	2972	3002	3021	3051	3069	2979	3022	3070
HCLTECH	742	749	754	761	765	733	710	678
HDFC	760	767	774	781	787	771	798	811
HDFCBANK	624	627	632	635	640	628	654	662
HEROMOTOCO	1617	1632	1646	1661	1675	1649	1683	1784
HINDALCO	98	100	101	103	104	99	107	118
HINDUNILVR	432	436	444	448	455	445	457	485
ICICIBANK	1091	1100	1105	1114	1119	1071	1103	1145
IDFC	146	150	152	156	159	148	156	167
INFY	2907	2939	2958	2989	3008	2923	2849	2673
ITC	280	284	290	293	299	292	297	293
JINDALSTEL	347	351	355	359	363	352	373	416
JPASSOCIAT	70	72	74	76	77	71	72	85
KOTAKBANK	648	651	655	658	661	656	665	658
LT	1390	1411	1426	1447	1462	1392	1437	1527
LUPIN	587	593	597	602	607	594	596	598
M&M	858	868	883	893	908	884	890	908
MARUTI	1395	1410	1426	1441	1457	1407	1476	1524
NTPC	146	147	149	150	152	149	149	154
ONGC	312	315	319	322	326	315	318	308
PNB	785	797	805	817	824	792	837	863
POWERGRID	106	107	108	109	110	107	109	112
RANBAXY	383	392	397	406	412	388	411	459
RELIANCE	822	829	833	840	845	820	848	860
RELINFRA	423	427	432	437	442	426	467	509
SBIN	2122	2145	2160	2184	2198	2113	2215	2358
SESAGOA	154	158	161	165	168	155	164	181
SIEMENS	499	507	512	521	526	501	556	620
SUNPHARMA	789	793	800	804	811	799	788	753
TATAMOTORS	299	304	308	313	317	295	296	306
TATAPOWER	97	98	99	99	100	97	97	103
TATASTEEL	337	345	351	358	364	343	367	400
TCS	1525	1543	1554	1572	1584	1527	1464	1362
ULTRACEMCO	1875	1888	1899	1911	1922	1881	1913	1936
WIPRO	428	435	440	447	453	427	414	406



Economic Calendar

Importance	IST	Location	Indicator	Unit	Forecast	Previous	Actual
Low	13:15	Euro Zone	French Trade Balance	B	-4.8	-5.3	
High	NA	Euro Zone	Spanish 10-y Bond Auction			5.20	1.6
Medium	NA	Euro Zone	French 10-y Bond Auction			2.30	3.1
Medium	16:30	Euro Zone	German Factory Orders (M o M)	%	0.6	0.8	
High	17:30	Britain	Asset Purchase Facility		375	375	
High	17:30	Britain	Official Bank Rate	%	0.5	0.5	
High	NA	Britain	MPC Rate Statement				
Low	18:00	USA	Challenger Job Cuts (Y o Y)	%		-24.4	
High	18:15	Euro Zone	Minimum Bid Rate	%	0.75	0.75	
High	19:00	Euro Zone	ECB Press Conference				
High	19:00	USA	Trade Balance	B	-42.8	-38.5	
High	19:00	USA	Initial Jobless Claims	K	356	344	
Medium	19:00	USA	Revised Nonfarm Productivity (Q o Q)	%	-1.5	-2	
Low	19:00	USA	Revised Unit Labor Costs (Q o Q)	%	4.2	4.5	
Low	21:00	USA	Natural Gas Storage	B		-171	
Medium	23:45	USA	FOMC Member Powell Speaks				



DISCLAIMER: This document is not for public distribution and has been furnished to you solely for your information and must not be reproduced or redistributed to any other person. Persons into whose possession this document may come are required to observe these restrictions.

The information and views in this report, our website & all the service we provide are believed to be reliable, but we do not accept any responsibility (or liability) for errors of fact or opinion. Users have the right to choose the products that suits them the most. Investment in Stocks has its own risks. Sincere efforts have been made to present the right investment perspective. The information contained herein is based on analysis and up on sources that we consider reliable. We, however, do not vouch for the accuracy or the completeness thereof. This material is for personal information and we are not responsible for any loss Incurred based upon it & take no responsibility whatsoever for any financial profits or loss which may arise from the recommendations above.

Recipients of this material should rely on their own investigations and take their own professional advice. Each recipient of this document should make such investigations as it deems necessary to arrive at an independent evaluation of an investment in the securities of companies referred to in this document including the merits and risks involved), and should consult their own advisors to determine the merits and risks of such an investment. Price and value of the investments referred to in this material may go up or down. Past performance is not a guide for future performance. Certain transactions - futures, options and other derivatives as well as non-investment grade securities - involve substantial risks and are not suitable for all investors. Reports based on technical analysis centers on studying charts of a stock's price movement and trading volume, as opposed to focusing on a company's fundamentals and as such, may not match with a report on a company's fundamentals.
All the Rights are reserved.

Contact Us: research@urjatrade.com

Web: www.LAAVLE.com

Registration: NSE - CASH INB230696132 | NSE - FO INF230696132 | BSE - CASH INB010696137

URJA INVESTMENT PTE. LTD.

Private & Confidential